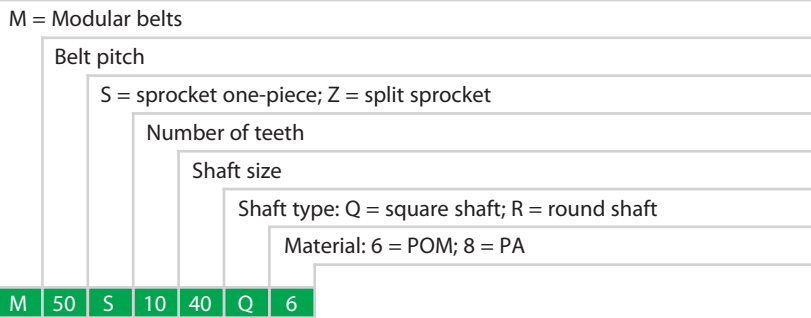


HabasitLINK[®]

Sprocket Series M5000



Sprocket availability

Type	Number of teeth	Diam. of pitch ϕd_p		A_1		Hub width B_L		Square bore Q		Standard material
		mm	inch	mm	inch	mm	inch	mm	inch	
S	6	102.1	4.0	43.0	1.70	40	1.57	40	1.5	POM
S	8	133.4	5.3	58.7	2.31	40	1.57	40	1.5	POM
S	10	165.2	6.5	74.6	2.94	40	1.57	40 / 60	1.5 / 2.5	POM
S	12	197.2	7.8	90.6	3.57	40	1.57	40 / 60	1.5	POM
S	16	261.5	10.3	122.7	4.83	40	1.57	40	1.5	POM

S: molded sprockets. Other sprocket and hub sizes on request.

Key ways for round bore shape follow European standards for metric sizes and US standards for imperial sizes.

For detailed dimensions see table in the Design Guide.

Other materials available on request.

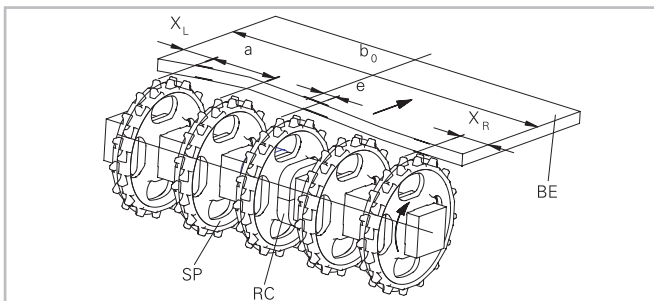


Sprocket one-piece

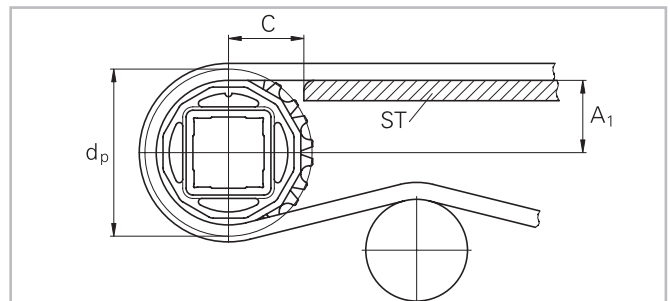


Split sprocket

Sprocket arrangement



BE Belt
 RC Retainer
 SP Sprocket
 b_0 belt width



The distance C between the sprocket axis and the slider support ST is minimal 53 mm (2.1").